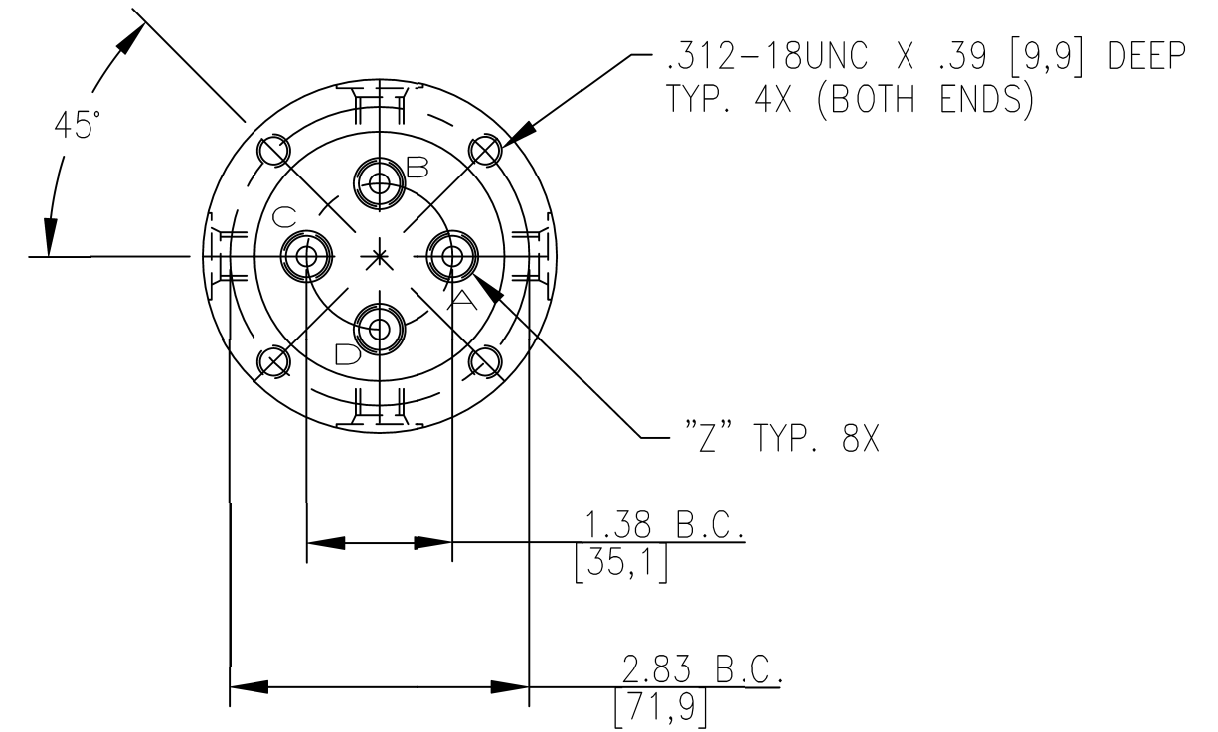
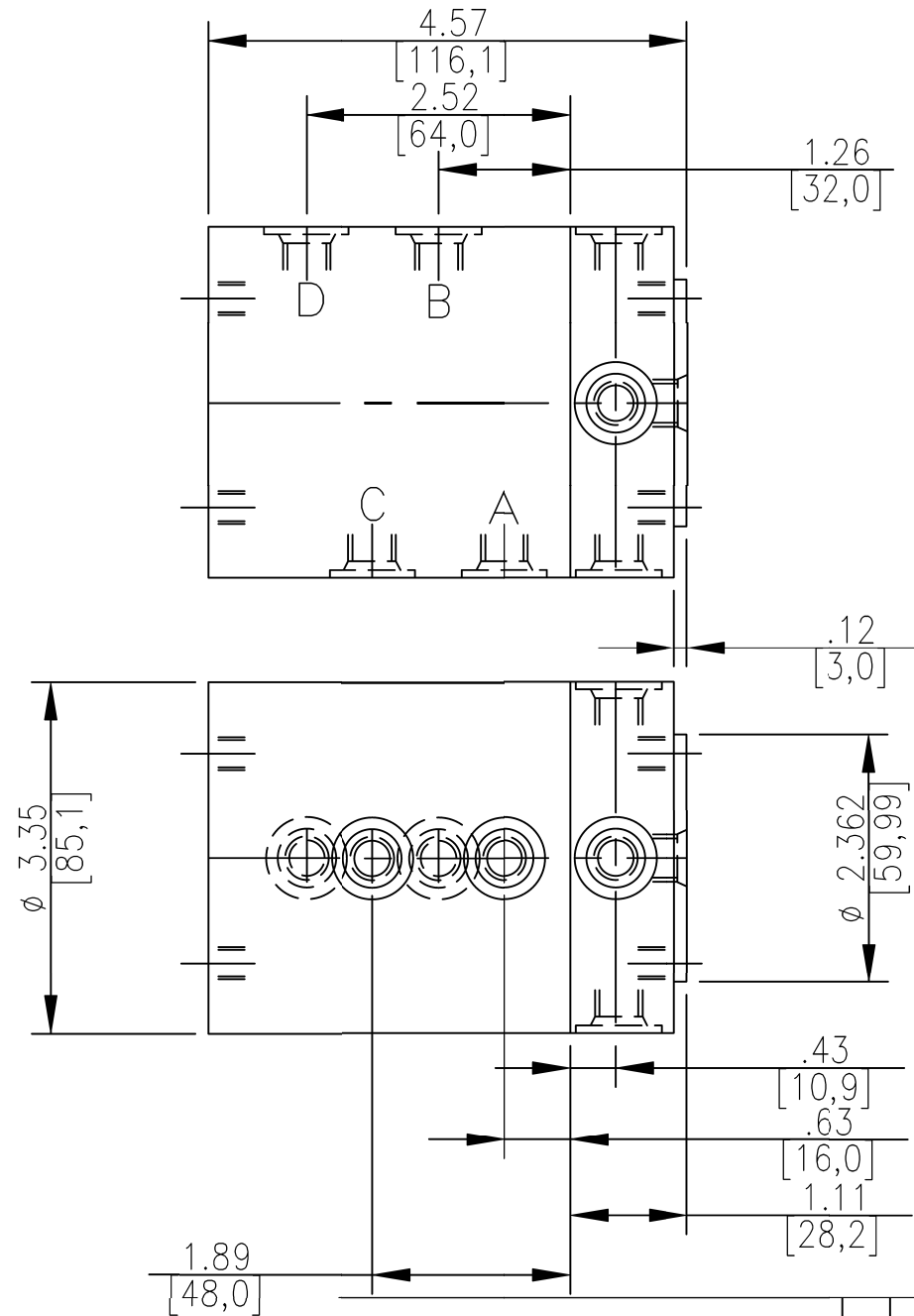


# SPECIFICATIONS

TEMPERATURE RANGE : 41°-140°F [5°-60°C]	RECOMMENDED OIL FILTRATION : 10-25 MICRON
VISCOSITY RANGE : 150-165 S.U.S. [15-250c.St]	WEIGHT : 10.20 LBS [4,6 KG]
HYDRAULIC OIL : HLP 23 ISO 3448-1975	STARTING TORQUES : 1500 PSI [80 BAR] = 53 IN.LBS. [6,0 NM] : 3000 PSI [207 BAR] = 66 IN.LBS. [7,5 NM] : 5000 PSI [350 BAR] = 82 IN.LBS. [9,3 NM]
SEAL MATERIAL : BUNA-N / VITON	
OPERATING PRESSURE : 1500-5000 psi [80-350 bar]	
MAXIMUM SPEED : 65 RPM	MODEL NUMBER : "Z"
FLOW RATE : 2.11 GPM [ 8 LPM]	CRV441 / CRV441V : #4 SAE (.438-20 UNF)
	CRV442 / CRV442V : G1/4 BSPP

NOTE: ALL DIMENSIONS ARE FOR REFERENCE ONLY.



SCALE: 1:2

PRH960110 RELEASED 3/25/97	DATE	DIMENSIONS IN BRACKETS ARE IN [mm]	<b>ENERPAC</b>	13000 WEST SILVER SPRING DR. BUTLER, WISCONSIN 53007	
	CHANGES	Specification Sheet		DESCRIPTION ROTARY COUPLER	
	ECD	MODEL NO. CRV441/CRV442	DR. JRE	DATE 02/25/97	DRAWING NO. ID5770

D28945