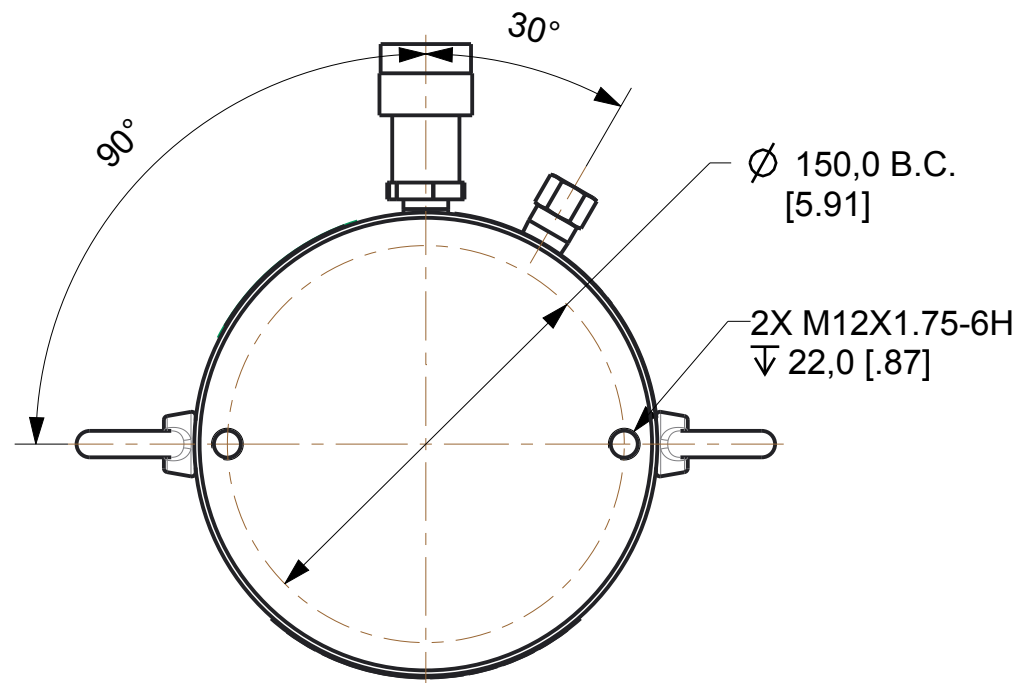


SPECIFICATIONS							
	MAX LOAD	DIM "A" COLLAPSED	DIM "A" EXTENDED	DIM "B"	STROKE	OIL CAPACITY	WEIGHT
HCR1002	1002 KN/ 113 TON	202 [7.95]	252 [9.92]	65 [2.56]	50 [1.97]	716 CM <sup>3</sup> [43.67 IN <sup>3</sup> ]	34 KG [74 LBS]
HCR1004		252 [9.92]	352 [13.86]		100 [3.94]	1,431 CM <sup>3</sup> [87.35 IN <sup>3</sup> ]	41 KG [90 LBS]
HCR1006		302 [11.89]	452 [17.80]		150 [5.91]	2,147 CM <sup>3</sup> [131.02 IN <sup>3</sup> ]	48 KG [105 LBS]
HCR1008		379 [14.92]	579 [22.80]	80 [3.15]	200 [7.87]	2,863 CM <sup>3</sup> [174.70 IN <sup>3</sup> ]	59 KG [131 LBS]
HCR10010		429 [16.89]	679 [26.73]		250 [9.84]	3,578 CM <sup>3</sup> [218.37 IN <sup>3</sup> ]	66 KG [146 LBS]
HCR10012		479 [18.86]	779 [30.67]		300 [11.81]	4,294 CM <sup>3</sup> [262.05 IN <sup>3</sup> ]	73 KG [161 LBS]
MAX PRESSURE - 700 BAR/10,150 PSI							



Language Code - Primary/Secondary eng/	Document Type: ID DRAWING	Description: ID SPEC HCR100		
<b>THIRD ANGLE PROJECTION</b>	Technical Reference: Juan Carlos Gomez	Rev A	Date of Issue 2016DEC13	Sheet 1/1
DO NOT SCALE DRAWING	Approver: Steve Held	HCR100ID		
Per ASME Y14.5 - 2009	Creator: John Van Roy			