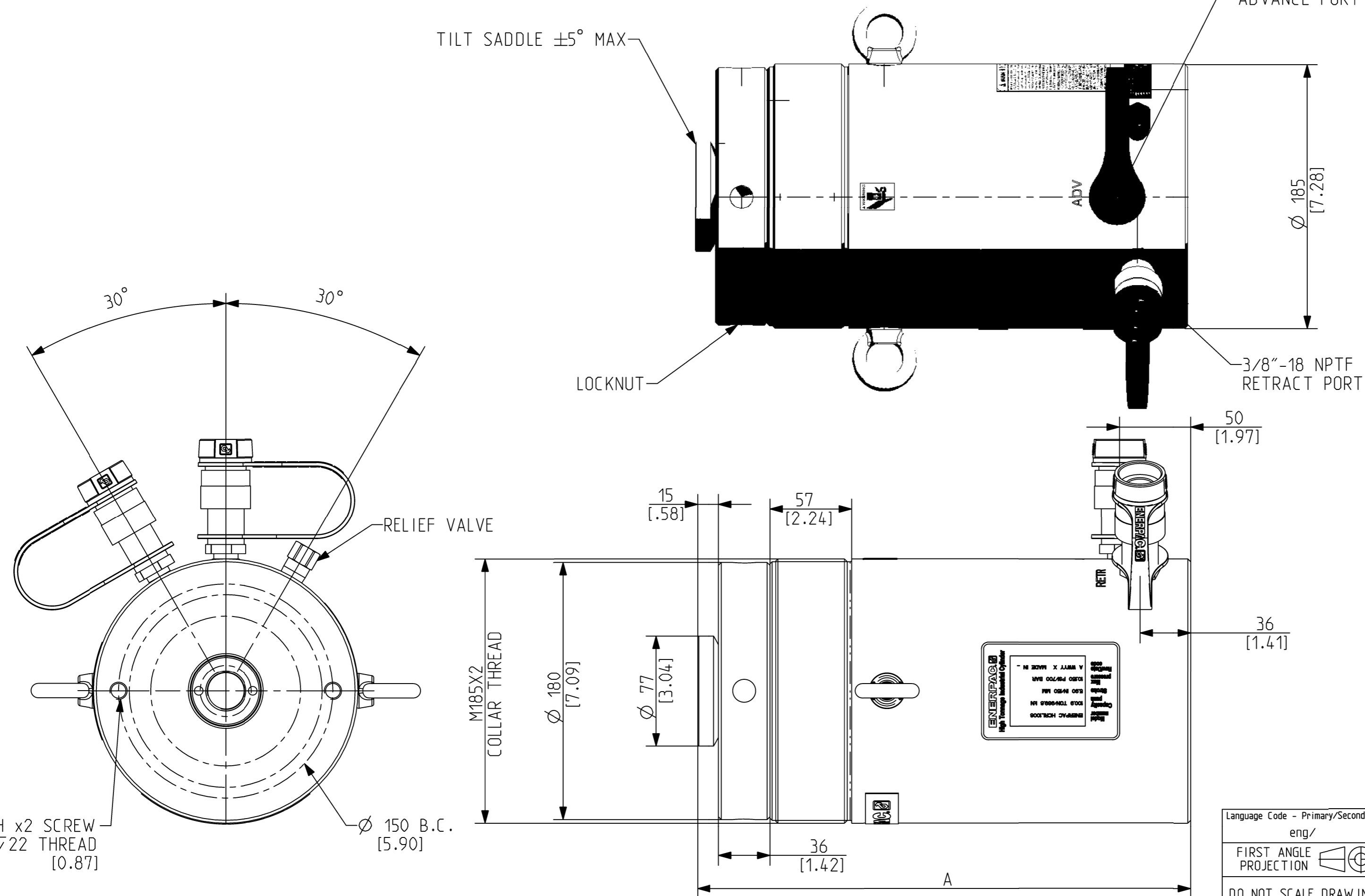
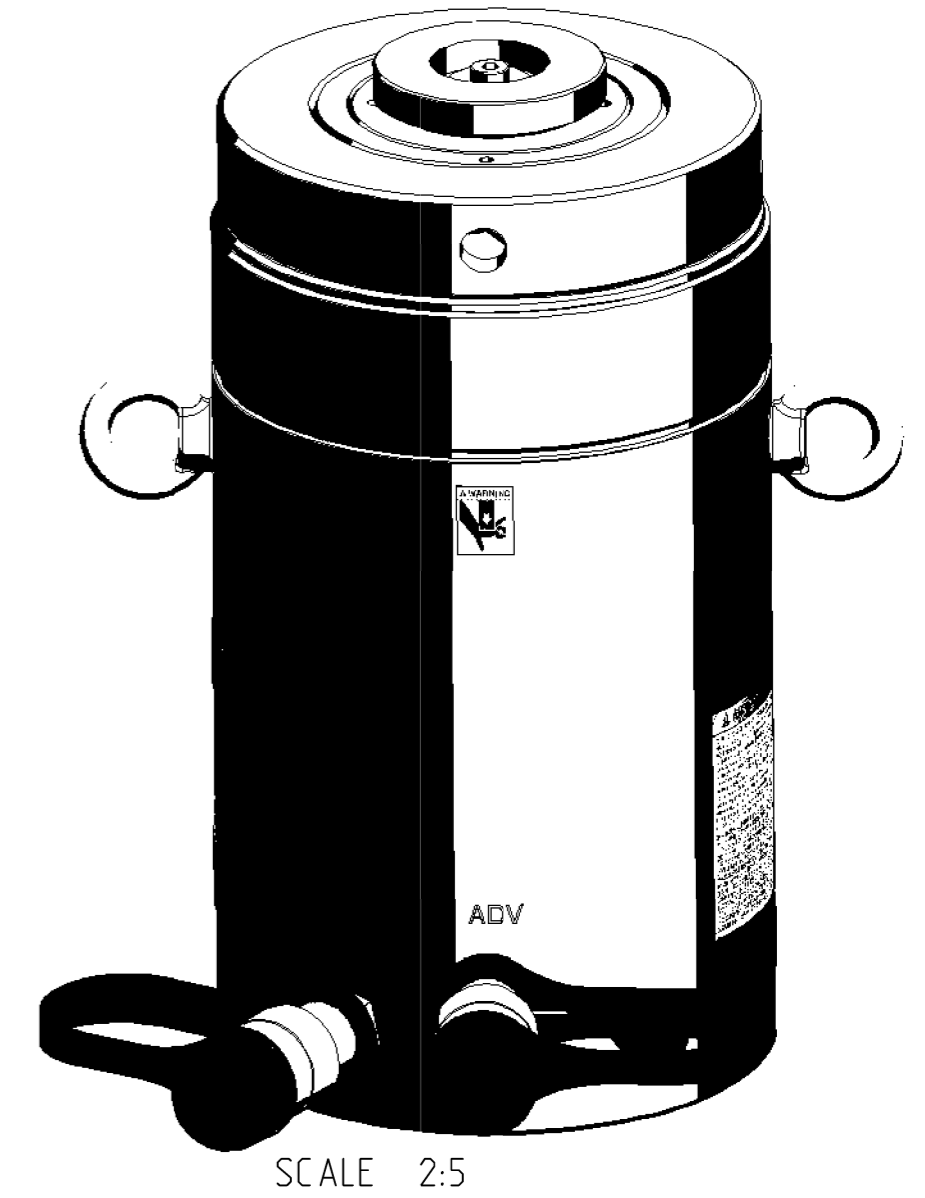


SPECIFICATIONS

	MAX LOAD	DIM "A" COLLAPSED	DIM "A" EXTENDED	STROKE	EPEC AREA (PUSHING)	EPEC AREA PULLING	AREA RATIO	OIL CAPACITY PUSHING	OIL CAPACITY PULLING	WEIGHT
HCRL1002	989.6KN/ 100.9 TON	246 [9.68]	296 [11.65]	50 [1.97]	141.4 CM <sup>2</sup> [21.913 IN <sup>2</sup> ]	15.7 CM <sup>2</sup> [2.435 IN <sup>2</sup> ]	9.0	707 CM <sup>3</sup> [43.14 IN <sup>3</sup> ]	79 CM <sup>3</sup> [4.79 IN <sup>3</sup> ]	47 KG [104 LBS]
HCRL1004		296 [11.65]	396 [15.59]	100 [3.94]			9.0	1414 CM <sup>3</sup> [86.27 IN <sup>3</sup> ]	157 CM <sup>3</sup> [9.59 IN <sup>3</sup> ]	56 KG [123 LBS]
HCRL1006		346 [13.62]	496 [19.52]	150 [5.91]			9.0	2121 CM <sup>3</sup> [129.41 IN <sup>3</sup> ]	236 CM <sup>3</sup> [14.38 IN <sup>3</sup> ]	64 KG [141 LBS]
HCRL1008		421 [16.57]	621 [24.44]	200 [7.87]			9.0	2827 CM <sup>3</sup> [172.54 IN <sup>3</sup> ]	314 CM <sup>3</sup> [19.17 IN <sup>3</sup> ]	77 KG [170 LBS]
HCRL10010		471 [18.54]	721 [28.38]	250 [9.84]			9.0	3534 CM <sup>3</sup> [215.68 IN <sup>3</sup> ]	393 CM <sup>3</sup> [23.96 IN <sup>3</sup> ]	85 KG [188 LBS]
HCRL10012		521 [20.51]	821 [32.32]	300 [11.81]			9.0	4241 CM <sup>3</sup> [258.81 IN <sup>3</sup> ]	471 CM <sup>3</sup> [28.76 IN <sup>3</sup> ]	94 KG [207 LBS]

MAX PRESSURE - 700 BAR/10,150 PSI



Language Code - Primary/Secondary eng/	Document Type: Assembly	Description: ID SPEC HCRL100		
FIRST ANGLE PROJECTION	Technical Reference: Juan Carlos Gomez	Rev G	Date of Issue 2018MAR22	Sheet 1/1
DO NOT SCALE DRAWING	Approver: Juan Carlos Gomez	HCRL100ID		
Per ASME Y14.5 - 2009	Creator: Miguel Montero	<p>This print and information herein is confidential and proprietary and is the property of ENERPAC. It is not to be copied or reproduced without written permission.</p>		