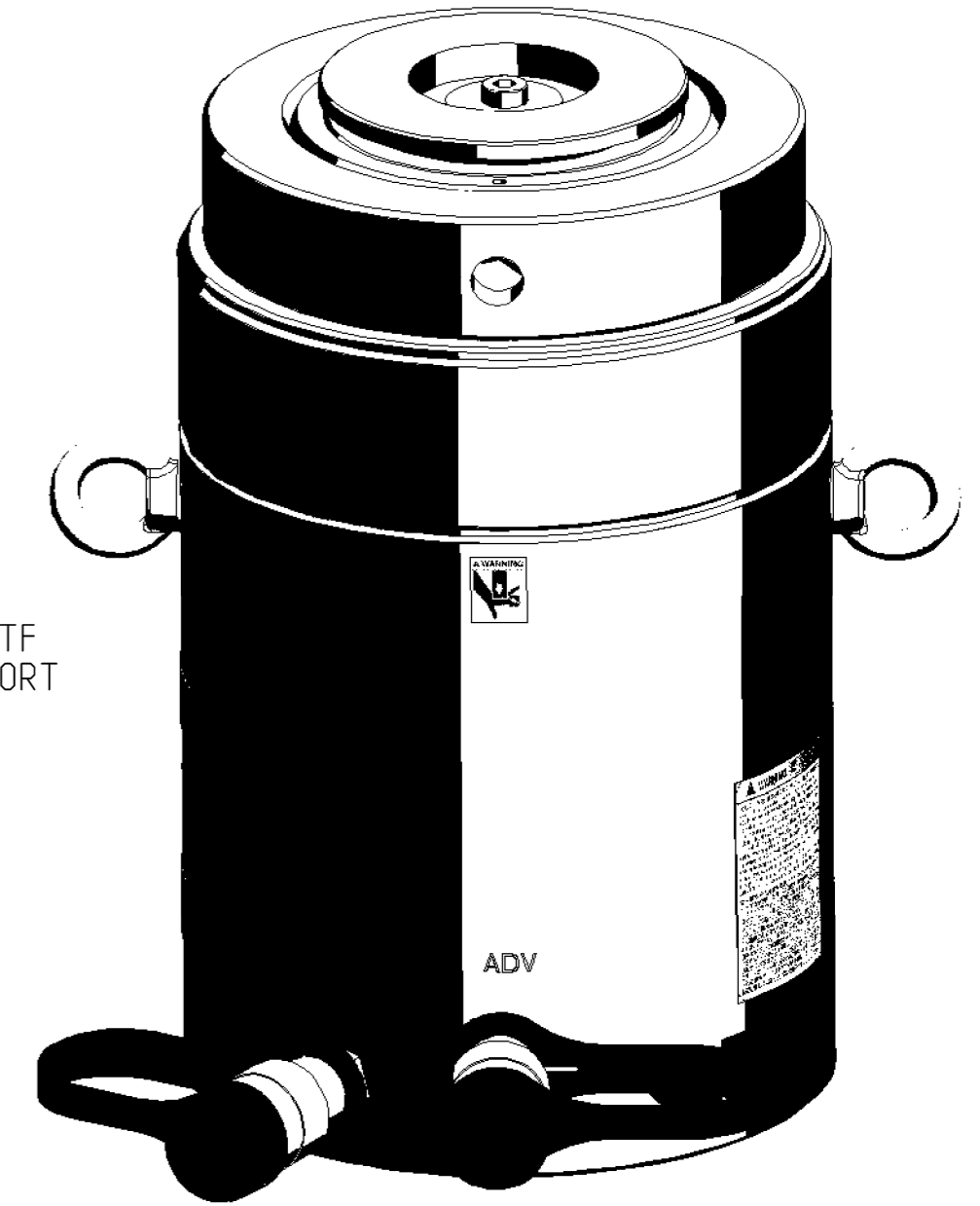


SPECIFICATIONS

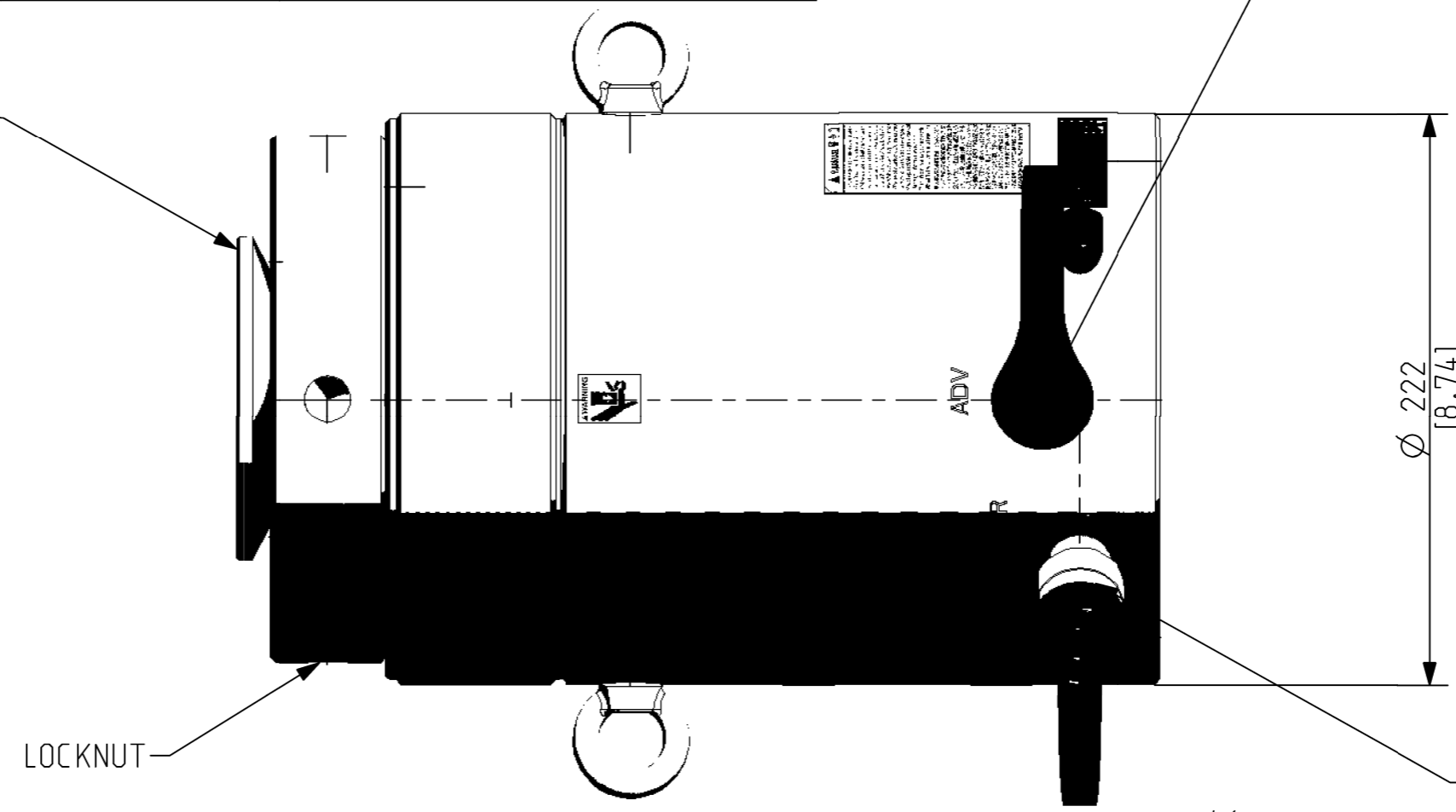
	MAX LOAD	DIM "A" COLLAPSED	DIM "A" EXTENDED	STROKE	EFEK AREA (PUSHING)	EFEK AREA PULLING	AREA RATIO	OIL CAPACITY PUSHING	OIL CAPACITY PULLING	WEIGHT
HCRL1502	1500.9 KN/ 153.0 TON	259 [10.19]	309 [12.16]	50 [1.97]	214.4 CM <sup>2</sup> [33.23 IN <sup>2</sup> ]	15.7 CM <sup>2</sup> [2.43 IN <sup>2</sup> ]	13.7	1072 CM <sup>3</sup> [65.42 IN <sup>3</sup> ]	79 CM <sup>3</sup> [4.79 IN <sup>3</sup> ]	72 KG [157 LBS]
HCRL1504		309 [12.16]	409 [16.10]	100 [3.94]				2144 CM <sup>3</sup> [130.84 IN <sup>3</sup> ]	157 CM <sup>3</sup> [9.59 IN <sup>3</sup> ]	84 KG [185 LBS]
HCRL1506		359 [14.13]	509 [20.03]	150 [5.91]				3216 CM <sup>3</sup> [196.26 IN <sup>3</sup> ]	236 CM <sup>3</sup> [14.38 IN <sup>3</sup> ]	97 KG [213 LBS]
HCRL1508		434 [17.09]	634 [24.96]	200 [7.87]				4288 CM <sup>3</sup> [261.69 IN <sup>3</sup> ]	314 CM <sup>3</sup> [19.17 IN <sup>3</sup> ]	116 KG [256 LBS]
HCRL15010		484 [19.06]	734 [28.90]	250 [9.84]				5360 CM <sup>3</sup> [327.11 IN <sup>3</sup> ]	393 CM <sup>3</sup> [23.96 IN <sup>3</sup> ]	129 KG [284 LBS]
HCRL15012		534 [21.02]	834 [32.83]	300 [11.81]				6432 CM <sup>3</sup> [392.50 IN <sup>3</sup> ]	471 CM <sup>3</sup> [28.76 IN <sup>3</sup> ]	142 KG [312 LBS]

MAX PRESSURE - 700 BAR/10,150 PSI



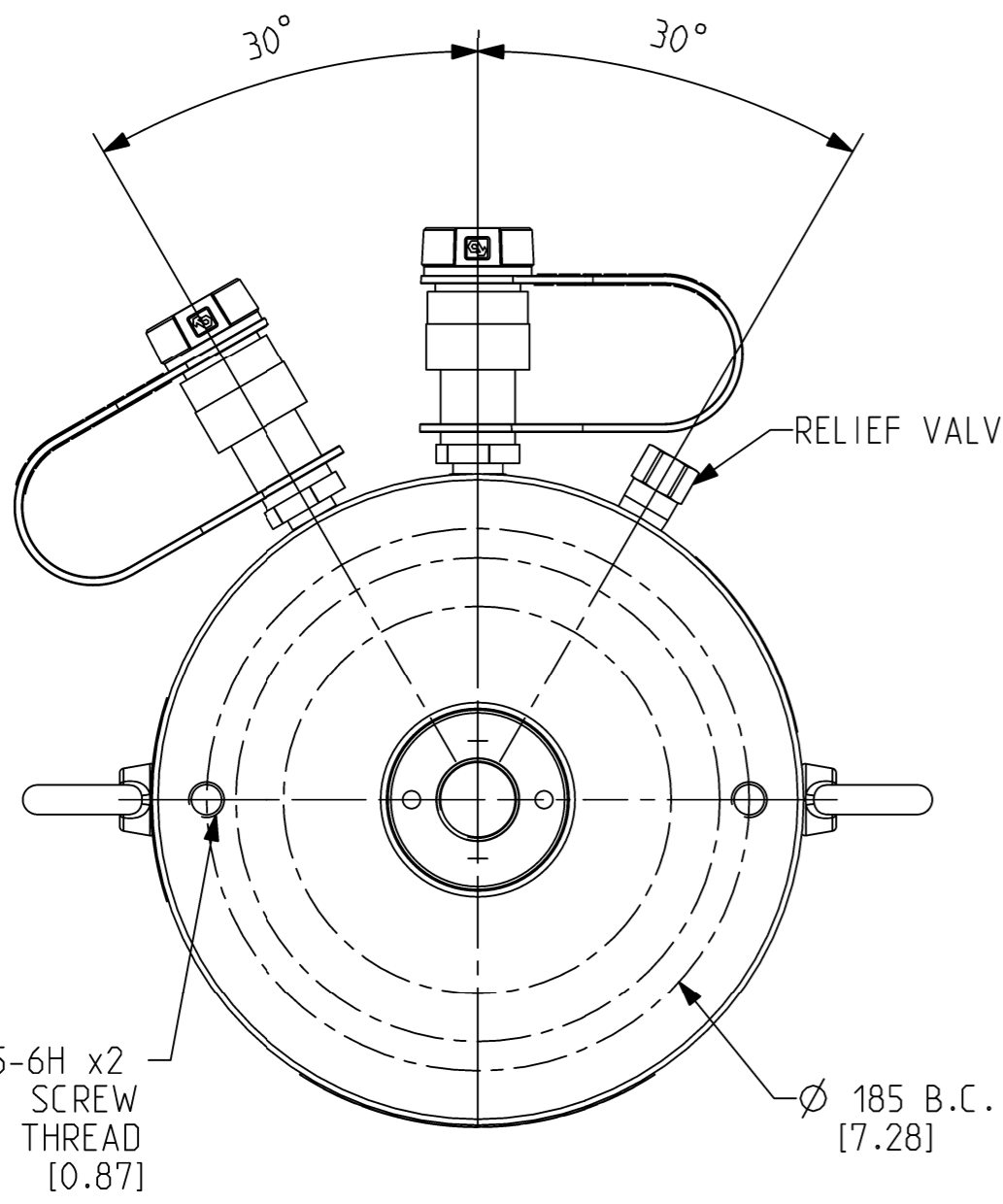
SCALE 2:5

TILT SADDLE ±5° MAX



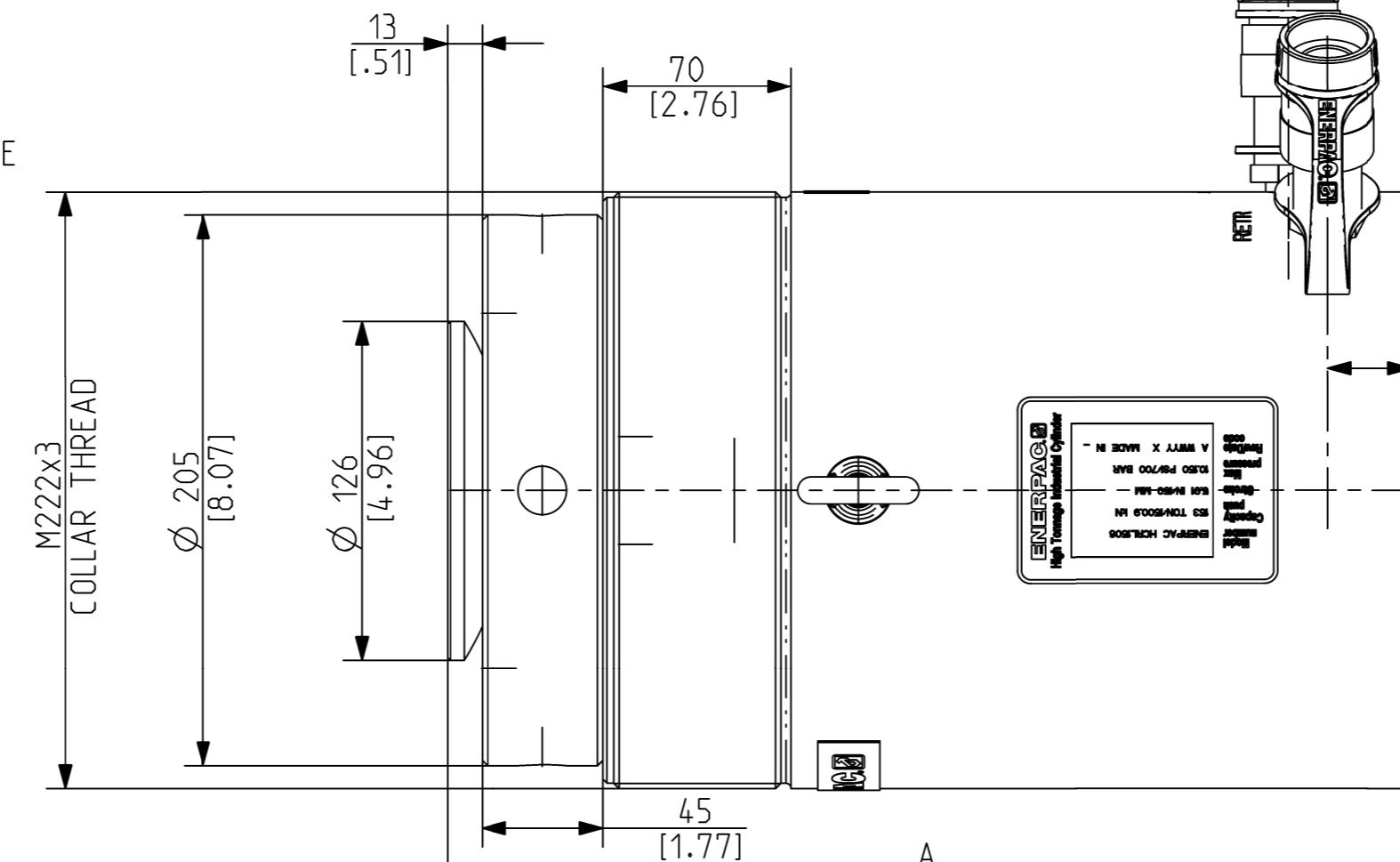
LOCKNUT

3/8"-18 NPTF RETRACT PORT



RELIEF VALVE

M12 x1.75-6H x2 SCREW  
∇22 THREAD  
[0.87]



M22x3 COLLAR THREAD

46 [1.81]

32 [1.24]

45 [1.77]

Language Code - Primary/Secondary  
eng/  
FIRST ANGLE PROJECTION

Document Type:  
Assembly  
Technical Reference:  
Juan Carlos Gomez

Description:  
ID SPEC HCRL150  
Rev F Date of Issue 2018MAR22  
HCRL1501D Sheet 1/1

DO NOT SCALE DRAWING  
Per ASME Y14.5 - 2009

Approver:  
Juan Carlos Gomez  
Creator:  
Miguel Montero

This print and information herein is confidential and proprietary and is the property of ENERPAC. It is not to be copied or reproduced without written permission.  
**ENERPAC**