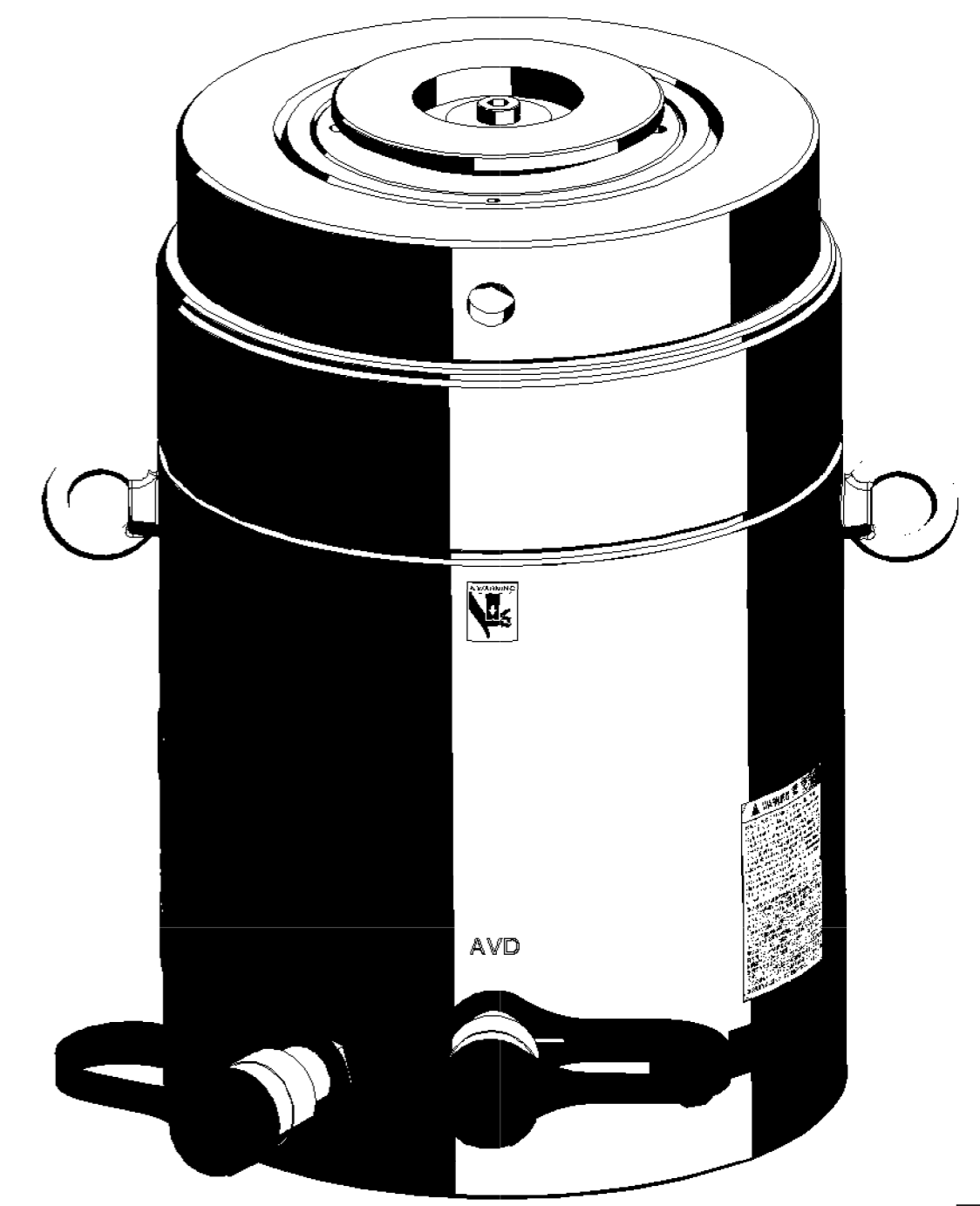


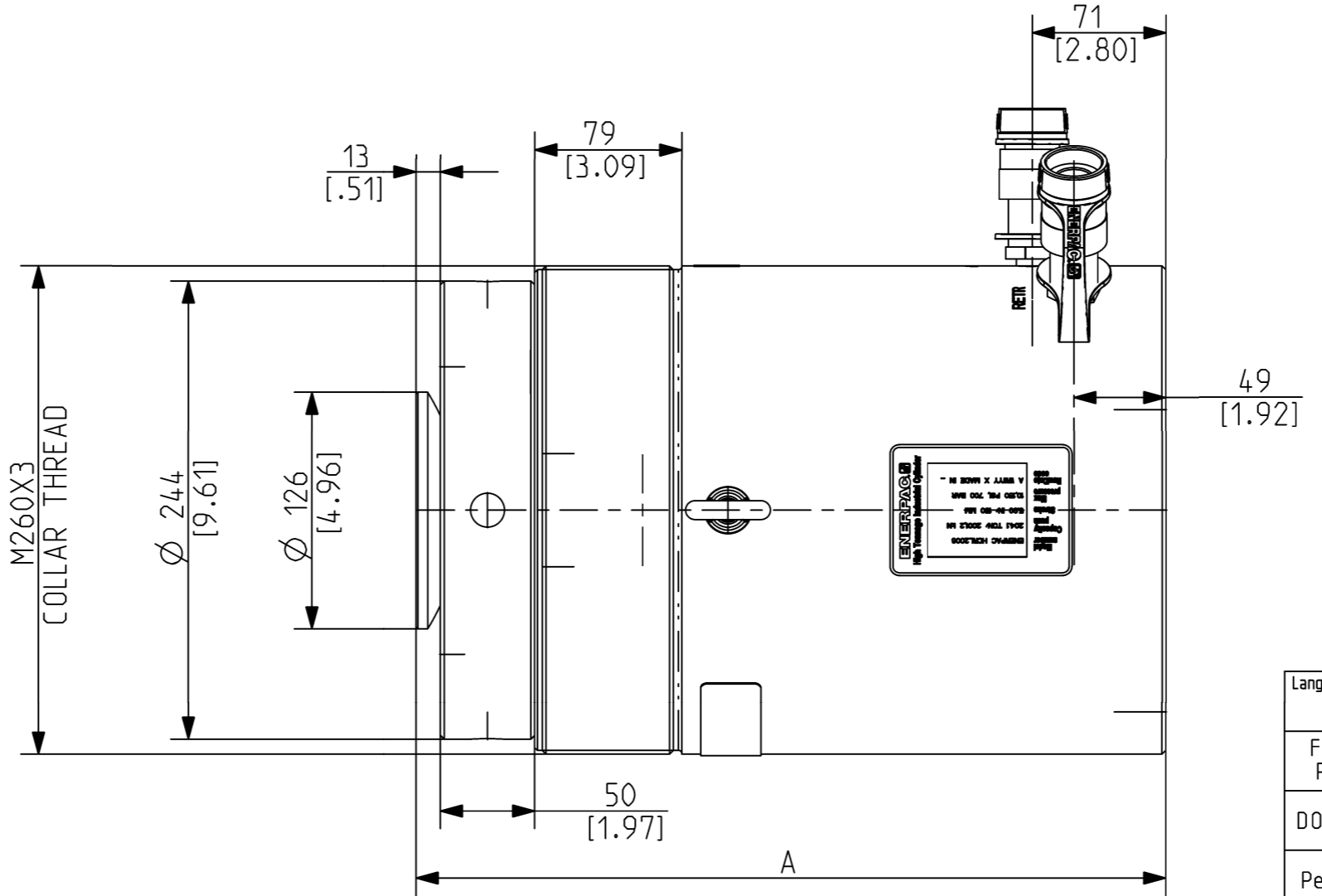
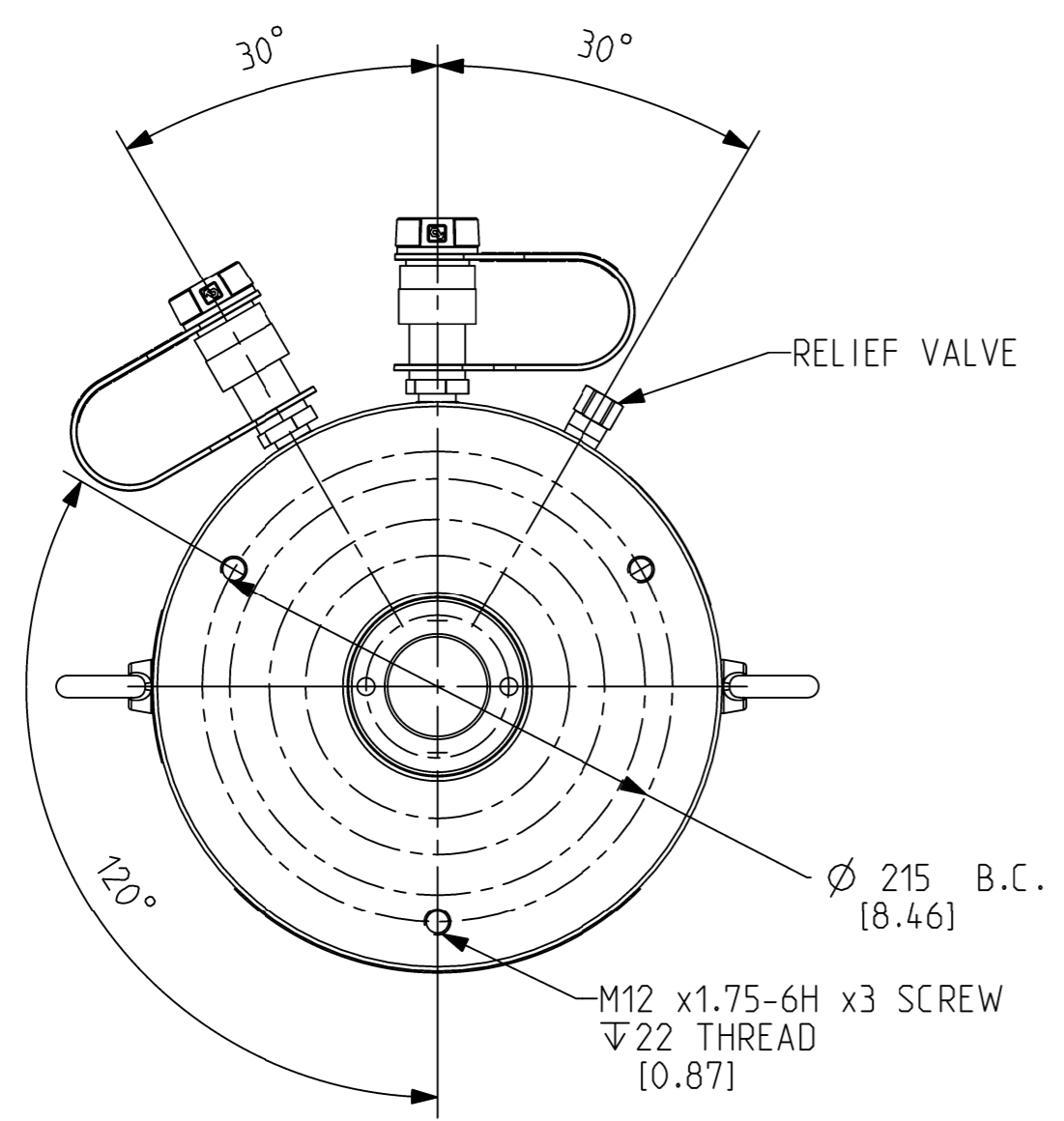
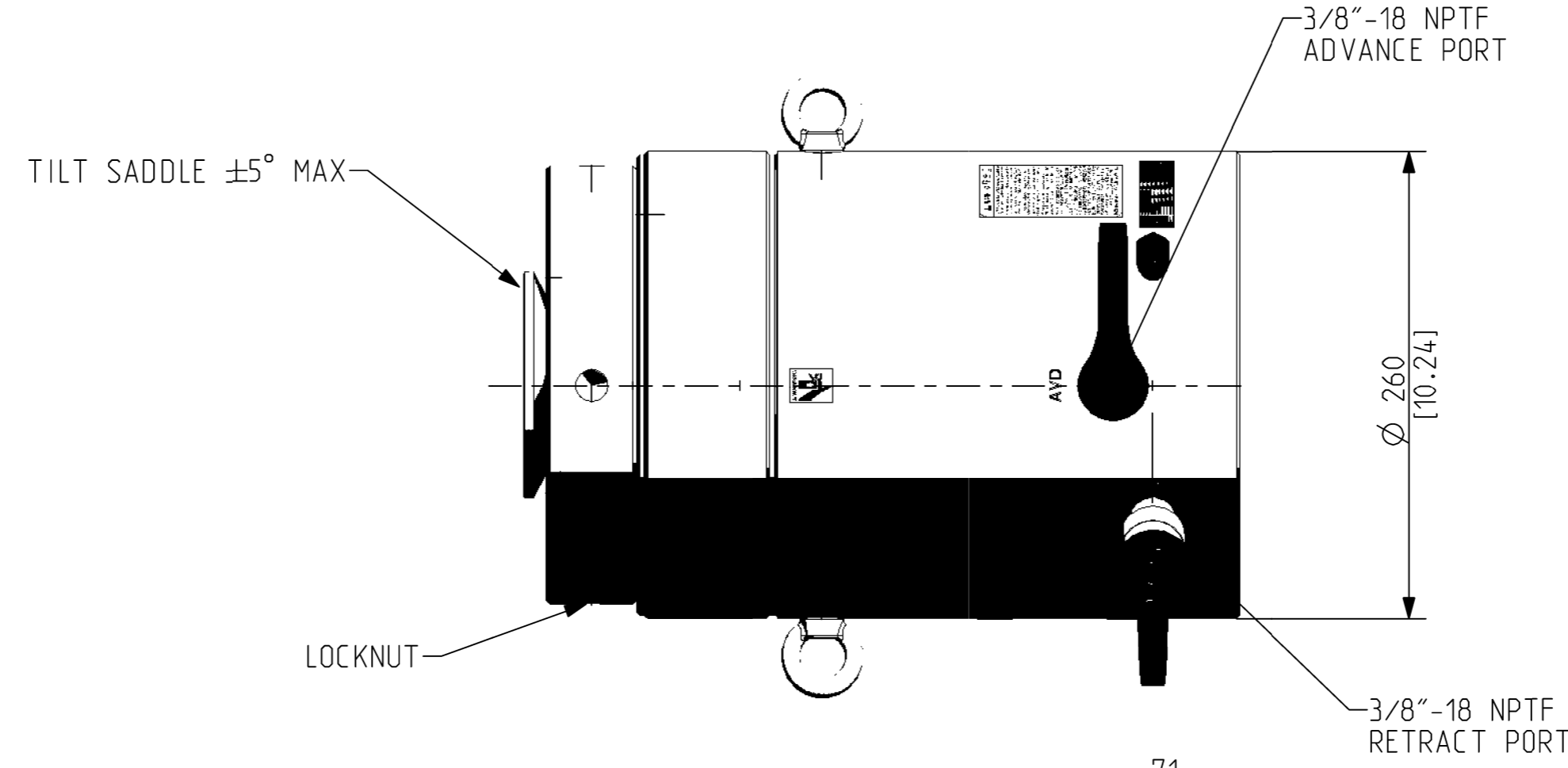
SPECIFICATIONS

	MAX LOAD	DIM "A" COLLAPSED	DIM "A" EXTENDED	STROKE	EFEK AREA (PUSHING)	EFEK AREA PULLING	AREA RATIO	OIL CAPACITY PUSHING	OIL CAPACITY PULLING	WEIGHT
HCRL2002	2001.2KN/ 204.1 TON	299 [11.77]	349 [13.74]	50 [1.97]	285.9 CM ² [44.31 IN ²]	35.3 CM ² [5.47 IN ²]	8.1	1429 CM ³ [87.23 IN ³]	177 CM ³ [10.78 IN ³]	113 KG [248 LBS]
HCRL2004		349 [13.74]	449 [17.67]	100 [3.94]			8.1	2859 CM ³ [174.46 IN ³]	353 CM ³ [21.57 IN ³]	129 KG [283 LBS]
HCRL2006		399 [15.70]	549 [21.61]	150 [5.91]			8.1	4288 CM ³ [261.62 IN ³]	530 CM ³ [32.35 IN ³]	145 KG [318 LBS]
HCRL2008		469 [18.46]	669 [26.34]	200 [7.87]			8.1	5718 CM ³ [348.87 IN ³]	707 CM ³ [43.14 IN ³]	168 KG [370 LBS]
HCRL20010		519 [20.43]	769 [30.28]	250 [9.84]			8.1	7147 CM ³ [436.06 IN ³]	884 CM ³ [53.92 IN ³]	184 KG [406 LBS]
HCRL20012		569 [22.40]	869 [34.21]	300 [11.81]			8.1	8577 CM ³ [523.31 IN ³]	1060 CM ³ [64.70 IN ³]	200 KG [440 LBS]

MAX PRESSURE - 700 BAR/10,150 PSI



SCALE 2:5



Language Code - Primary/Secondary eng/	Document Type: Assembly	Description: ID SPEC HCRL200		
FIRST ANGLE PROJECTION	Technical Reference: Juan Carlos Gomez	Rev F	Date of Issue 2018MAR22	Sheet 1/1
DO NOT SCALE DRAWING	Approver: Juan Carlos Gomez	HCRL2001D		
Per ASME Y14.5 - 2009	Creator: Miguel Montero			