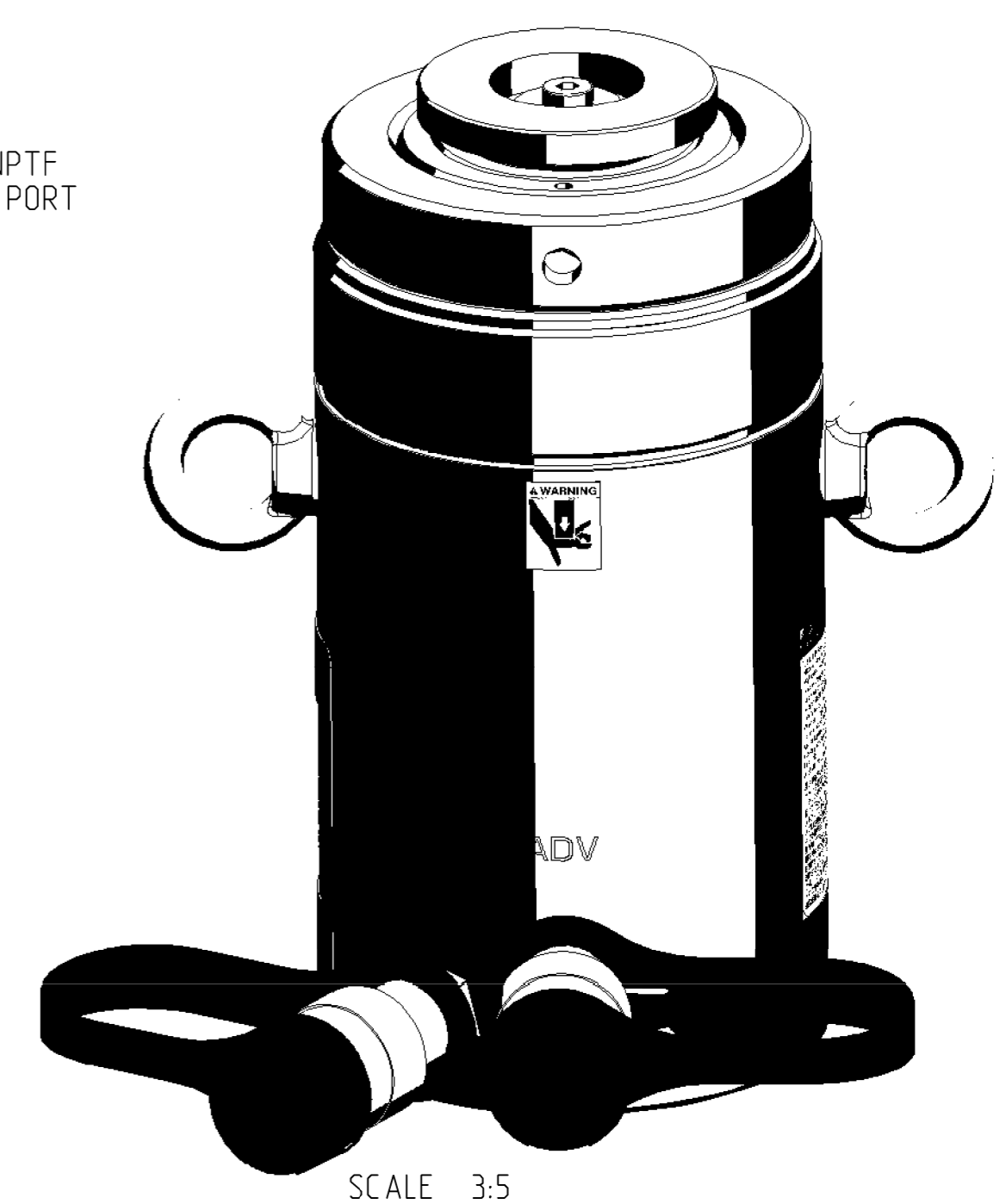
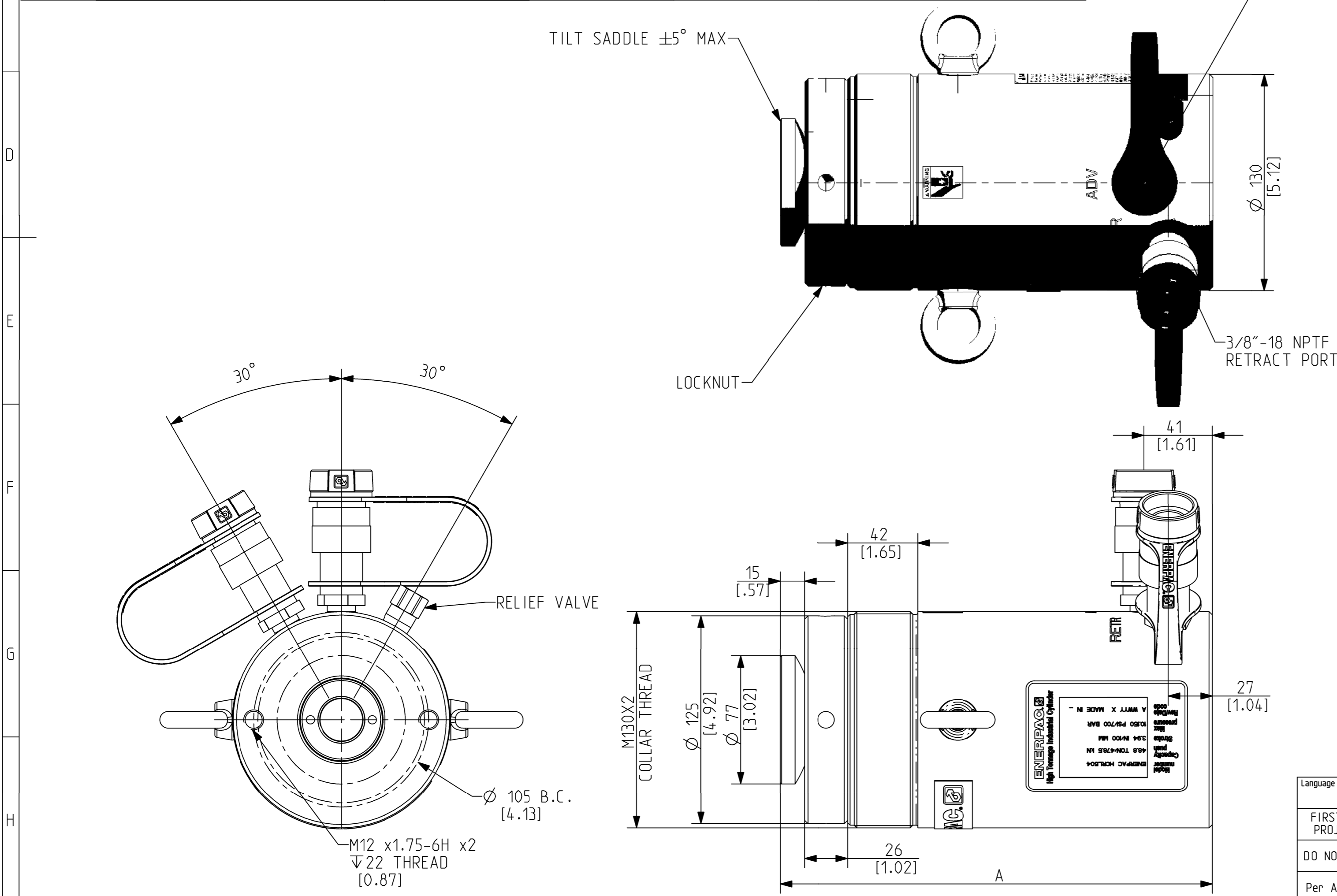


SPECIFICATIONS

	MAX LOAD	DIM "A" COLLAPSED	DIM "A" EXTENDED	STROKE	EFEK AREA (PUSHING)	EFEK AREA PULLING	AREA RATIO	OIL CAPACITY PUSHING	OIL CAPACITY PULLING	WEIGHT
HCRL502	478.5 KN/ 48.8 TON	210 [8.35]	260 [9.92]	50 [1.97]	68.4 CM ² [10.60 IN ²]	5.7 CM ² [0.88 IN ²]	11.9	342 CM ³ [20.87 IN ³]	29 CM ³ [1.75 IN ³]	21 KG [46 LBS]
HCRL504		260 [10.24]	360 [14.17]	100 [3.94]			11.9	684 CM ³ [41.74 IN ³]	57 CM ³ [3.49 IN ³]	25 KG [56 LBS]
HCRL506		310 [12.20]	460 [18.11]	150 [5.91]			11.9	1025 CM ³ [62.55 IN ³]	86 CM ³ [5.24 IN ³]	30 KG [65 LBS]
HCRL508		377 [14.84]	577 [22.71]	200 [7.87]			11.9	1367 CM ³ [83.42 IN ³]	115 CM ³ [6.99 IN ³]	36 KG [79 LBS]
HCRL5010		427 [16.81]	677 [26.65]	250 [9.84]			11.9	1709 CM ³ [104.29 IN ³]	143 CM ³ [8.73 IN ³]	40 KG [88 LBS]
HCRL5012		477 [18.77]	777 [30.59]	300 [11.81]			11.9	2051 CM ³ [125.16 IN ³]	172 CM ³ [10.48 IN ³]	45 KG [98 LBS]

MAX PRESSURE - 700 BAR/10,150 PSI



3/8"-18 NPTF
ADVANCE PORT

3/8"-18 NPTF
RETRACT PORT

TILT SADDLE ±5° MAX

LOCKNUT

RELIEF VALVE

Ø 105 B.C.
[4.13]

M12 x1.75-6H x2
∇22 THREAD
[0.87]

Language Code - Primary/Secondary eng/	Document Type: Assembly	Description: ID SPEC HCRL50		
FIRST ANGLE PROJECTION	Technical Reference: Juan Carlos Gomez	Rev F	Date of Issue 2018MAR22	Sheet 1/1
DO NOT SCALE DRAWING	Approver: Juan Carlos Gomez	HCRL501D		
Per ASME Y14.5 - 2009	Creator: Miguel Montero	<small>This print and information herein is confidential and proprietary and is the property of ENERPAC. It is not to be copied or reproduced without written permission.</small> ENERPAC		