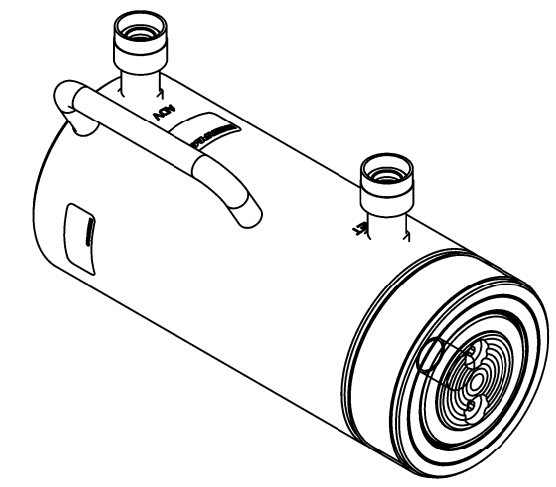
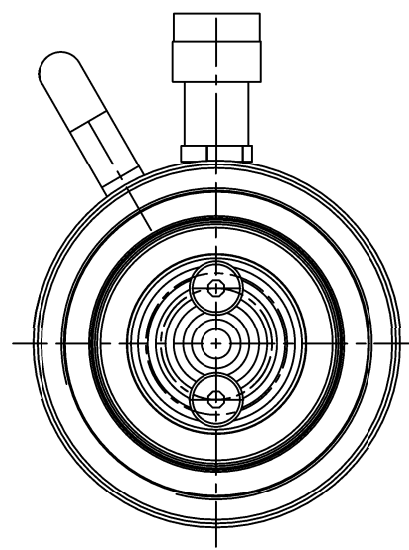
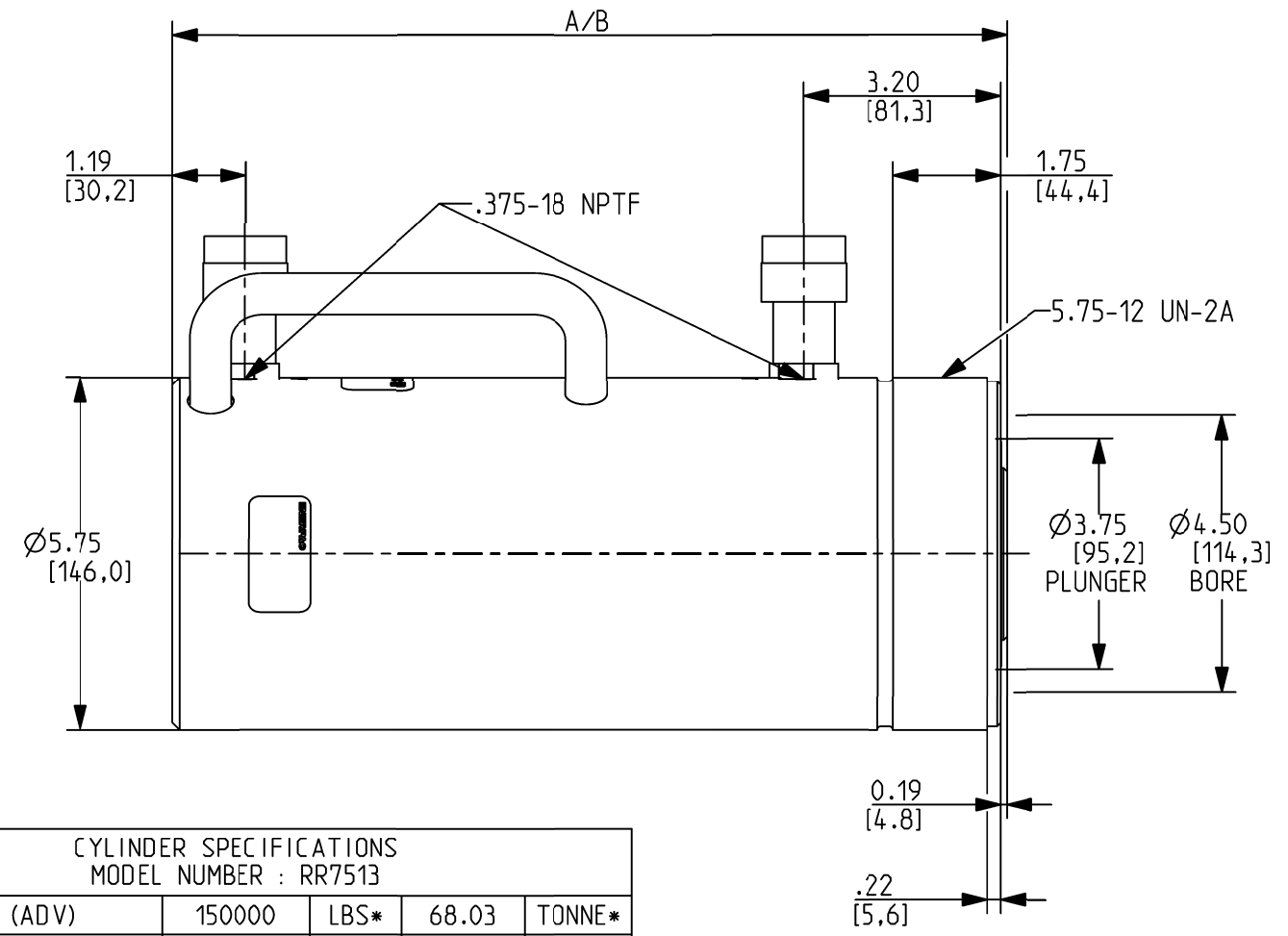


NOTE:

1. HANDLE NOT SHOWN. SEE ID1850 FOR HANDLE SPECIFICATIONS.



ISOMETRIC VIEW
SCALE 3:10

CYLINDER SPECIFICATIONS
MODEL NUMBER : RR7513

FORCE (ADV)	150000	LBS*	68.03	TONNE*
FORCE (RET)	34000	LBS*	15.42	TONNE*
MAX FORCE (ADV)	159200	LBS*	72.21	TONNE*
STROKE	13.13	IN	333.5	mm
EFFECTIVE AREA (ADV)	15.92	IN ²	102.7	cm ²
EFFECTIVE AREA (RET)	4.90	IN ²	31.6	cm ²
OIL CAPACITY (ADV)	209.0	IN ³	3425	cm ³
OIL CAPACITY (RET)	64.0	IN ³	1049	cm ³
COLLAPSED HEIGHT (A)	20.69	IN	525.5	mm
EXTENDED HEIGHT (B)	33.82	IN	859.0	mm
BORE DIAMETER	4.50	IN	114.3	mm
PLUNGER DIAMETER	3.75	IN	95.2	mm
WEIGHT	160	LBS	73	Kg
INTERNAL PRESSURE θ RATED CAPCITY (ADV)	9422	PSI	649.624	BAR
INTERNAL PRESSURE θ RATED CAPCITY (RET)	6939	PSI	478.42	BAR
MAX PRESSURE	10000	PSI	689	BAR
MAJORITY MATERIAL				
*LBS =	POUND			
*TONNE =	METRIC TON			
ALL DIMENSIONS ARE REFERENCE ONLY				

Unless Otherwise Specified Dimensions are in INCHES Tolerances are: X.X ±.1 X.XX ±.01 X.XXX ±.005 Angles ±1.0°	Language Code - Primary/Secondary	eng/	Document Type:	ID drawing	Description:		
	THIRD ANGLE PROJECTION		Technical Reference:	Akhilesh Subrahmanya	RR7513 ID DRAWING		
	DO NOT SCALE DRAWING		Approver:	Akhilesh Subrahmanya	Rev	Date of Issue	ID1851
	Per ASME Y14.5 - 2009		Creator:	Rajesh Martin Pais	C	2017MAY22	1/1
				<small>This print and information herein is the property of ENERPAC. It is not to be copied or reproduced without written permission.</small>			