

▼ One leg of ML40 Mini-Lift Hydraulic Gantry



- Compact design for use in areas with limited space
- Self-contained hydraulics with synchronized lifting for enhanced safety
- Powered travel, under load, standard on all models for ultimate utilization
- Three-stage, double-acting cylinder provides extended lifting capacity
- Easy-to-use handheld pendant control can operate four legs simultaneously
- Compatible with standard Enerpac gantry accessories
- Operates on 115, 230 VAC 1-phase or 380-415 VAC 3-phase power (1 circuit per leg)
- ASME B30.1 compliant and load tested under witness of Lloyd's Register.

▼ Moving and positioning a 25 ton boiler using the ML40 Mini-Lift Gantry.



▼ SBL1100 gantry offloading a large generator for installation in a power plant.



## Lift Heavy Machinery Safely

### Portable design with precision control



#### Header Beams

Sold in pairs and includes lifting points and fork pockets for easy positioning on gantry towers.

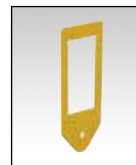
Description	Model Number
6 metres length	<b>HBH6</b>
8 metres length	<b>HBH8</b>



#### Skid Tracks

Skid tracks used for leveling and load distribution to reduce ground bearing pressure. Available in two standard lengths.

Description	Model Number
3 metres length	<b>GST100-3</b>
6 metres length	<b>GST100-6</b>



#### Lifting Anchors

Designed to transfer the load to the top of the header beam. Can accommodate a 250-ton shackle or attach directly to the lifted load.



#### Higher Capacities SL and SBL-Series Hydraulic Gantries

When the ML-Series Mini Gantry isn't quite enough capacity or height for your application,

Enerpac offers a full range of safe-to-operate full featured telescopic hydraulic gantries, up to 10.484 kN capacity and lifting heights up to 12 metres. Contact Enerpac for more details.

# Mini-Lift Hydraulic Gantry



## ML-Series, Mini-Lift Gantry

The cost-effective, compact ML40 Mini-Lift Hydraulic Gantry System, with wireless controls offers several key features:

### Safety:

Stroke synchronization ensures a level lift regardless of load distribution. PLC-controlled lifting using feedback from a stroke encoder maintains even height on all legs and will stop the lift if necessary to prevent issues.

### Capacity:

400 kN lifting capacity at full extended lift height. Even with its compact size, the ML40 can lift full capacity to full height of 5,5 metres (18 ft), making it the most versatile portable gantry in the market.

### Compact:

Fits through standard doorway and is easily moved and set up. The ML40 gantry can be moved through the tightest spaces imaginable in all industrial settings. Easy to push, pull and maneuver, the ML40 can get into spaces that no other gantry can.

## ML Series



Capacity (with 4 legs):

**400 kN**

Maximum Lifting Height:

**5,5 metres**



### Wireless Pendant

- Stroke measurement and closed loop synchronization ensure level lifting and lowering
- Integrated 1.8 inch color display provides load and stroke information for all four lift points.



### Mini-Lift Gantry Transport Frame

Galvanized steel transport frames to allow shipment of mini gantry legs via standard truck lines. Two legs mount on each frame

which includes storage for controls and accessories.

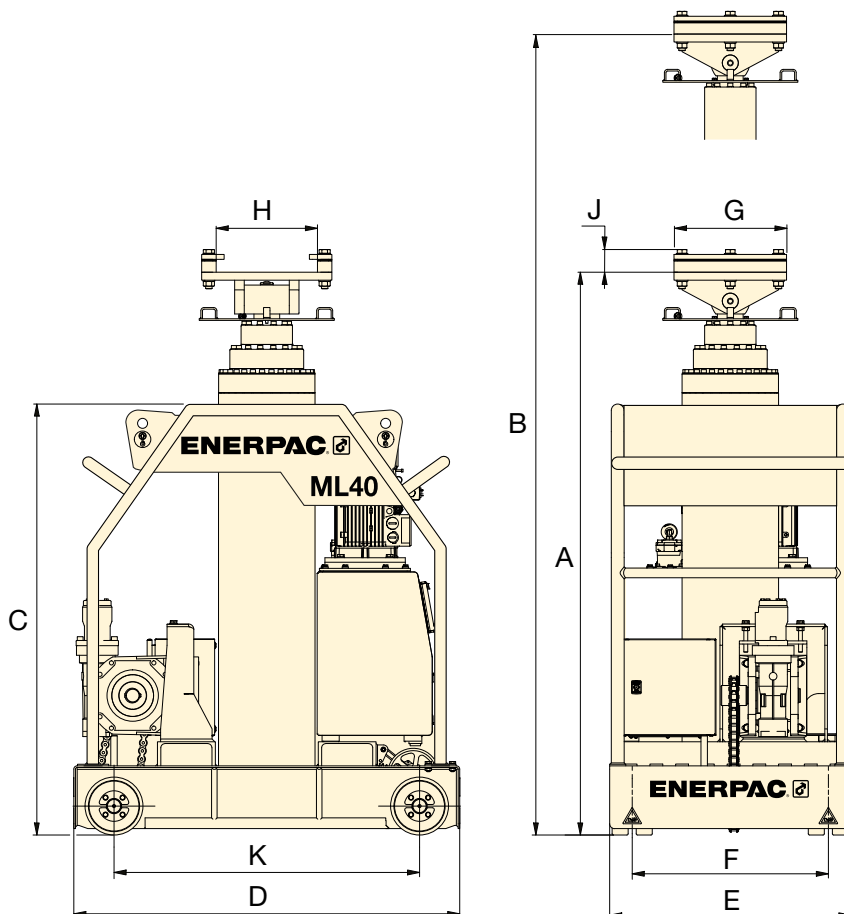
Description	Model Number
Set of two frames	<b>ML40TF</b>



### Operating Voltages

ML40 is available in three voltages. 1 circuit per leg.

Voltage	Model Number
115 V, 1 phase, 16 A	<b>ML40B</b>
208-240 V, 1 phase, 8 A	<b>ML40E</b>
380-415 V, 3 phase, 2 A	<b>ML40W</b>



Max. Capacity *	Model Number (4 legs)	Retracted Height A (mm)	Stage 1		Stage 2		Stage 3		Base Height C (mm)	Base Length D (mm)	Base Width E (mm)	Track Gauge F (mm)	Beam Plate			Wheel Base K (mm)	Wheel Base ** (kg)
			Max. Height B (mm)	Max. Capacity *	Max. Height B (mm)	Max. Capacity *	Max. Height B (mm)	Max. Capacity *					Length G (mm)	Width H (mm)	Height J (mm)		
400	<b>ML40</b>	1900	3000	400	4200	400	5500	400	1390	1200	750	610	350	315	71	950	1350

\* Capacity with 4 legs.

\*\* Weight per leg including oil.